



INSTALLATION GUIDE

Please check off all your parts against the CAD drawing you have been supplied. Check for both quality and quantity.

Any discrepancies or quality issues need to be reported within 24 hours from receipt of delivery.

A-FENCE

PROFILES



Aluminium Post



Aluminium Slat
50mm, 100mm, 150mm



Aluminium Slat Spacer / Cover trim



Steel in-ground or on-ground
base plate



Aluminium Base Plate Covers



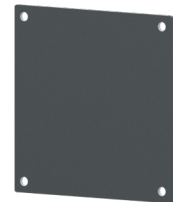
Stainless steel corner brackets
with self drillers



Post fixing screws



Post caps



Post plates



Sikaflex



M10 x 100mm Concrete
fixings 4 per post



No. 2 Phillips Screw

A-FENCE

TOOLS REQUIRED



Drill



4mm Drill & 6mm Drill Bits



Spirit Level



Plastic sheeting



Impact Driver



Ratchet with 13mm socket



Rubber Mallet



Mastic Gun



8mm Nut driver



No. 2 pozidrive
screwdriver bit



Masonry Drill Bits



Digging Equipment



Chop saw
with aluminium blade, recommended
60 to 80 tooth



Masonry Drill

**YOU NEED YOUR CAD DRAWING AVAILABLE TO
PROCEED WITH YOUR INSTALLATION**

A-FENCE

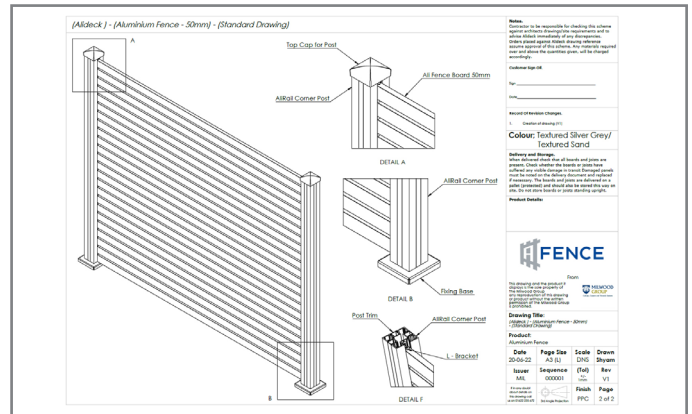
INSTALLATION INSTRUCTIONS

1. UNPACK AND CHECK

Unpack and check all component parts as per your CAD drawing. Check the list of parts on your CAD drawing against the delivery of goods received. Any discrepancies found must be reported within 24 hours of receipt of goods/delivery.

2. REFER TO CAD DRAWING

Your supplied CAD drawing will have a list of parts, identify all parts to the images above.



3. INSTALL CONCRETE FOUNDATIONS

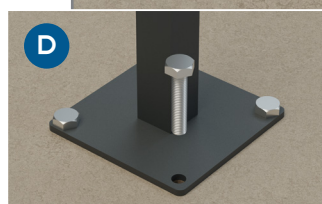
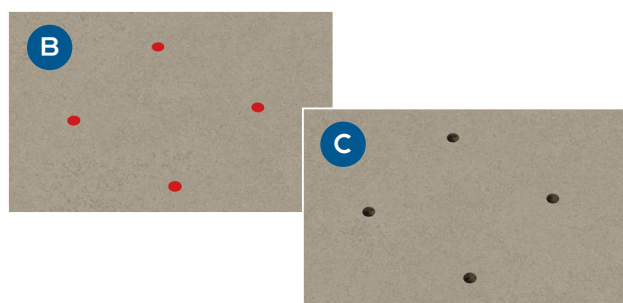
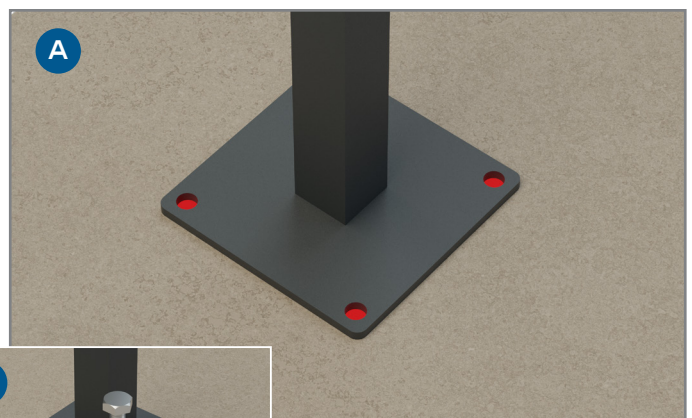
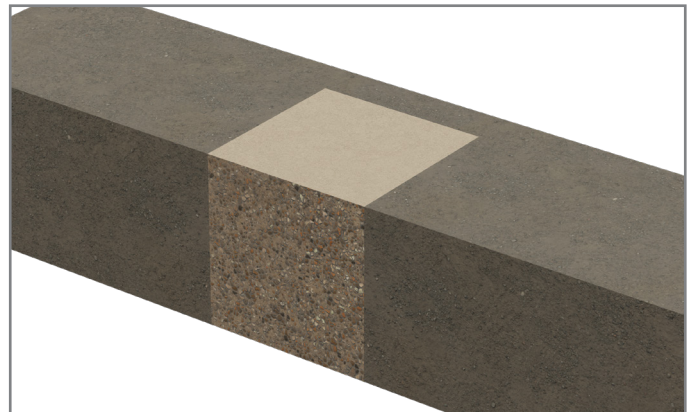
You have 2 options; either in-ground or on-ground installation. If on-ground option is chosen ensure the top of the foundations are level to each other, if this is not possible because you are on a hill please consider the difference in height between the two foundations and allow for this on your post length.

Top fix on-ground option

Depending on location we would recommend a concrete foundation of approximately 400mm x 400mm x 400mm, for exposed areas we would recommend 600mm x 600mm x 600mm for each post.

Once the concrete foundation has been installed and is level and has cured, the base plate can now be bolted to the foundation using the 13mm x 100mm concrete fixings supplied.

Using the base plate as a template mark out your 4 hole positions ensuring the centre to centre dimension is correct to the CAD drawing supplied. Drill the 4 fixing holes for each base plate using a masonry drill and a 10mm SDS drill bit.



A-FENCE INSTALLATION INSTRUCTIONS

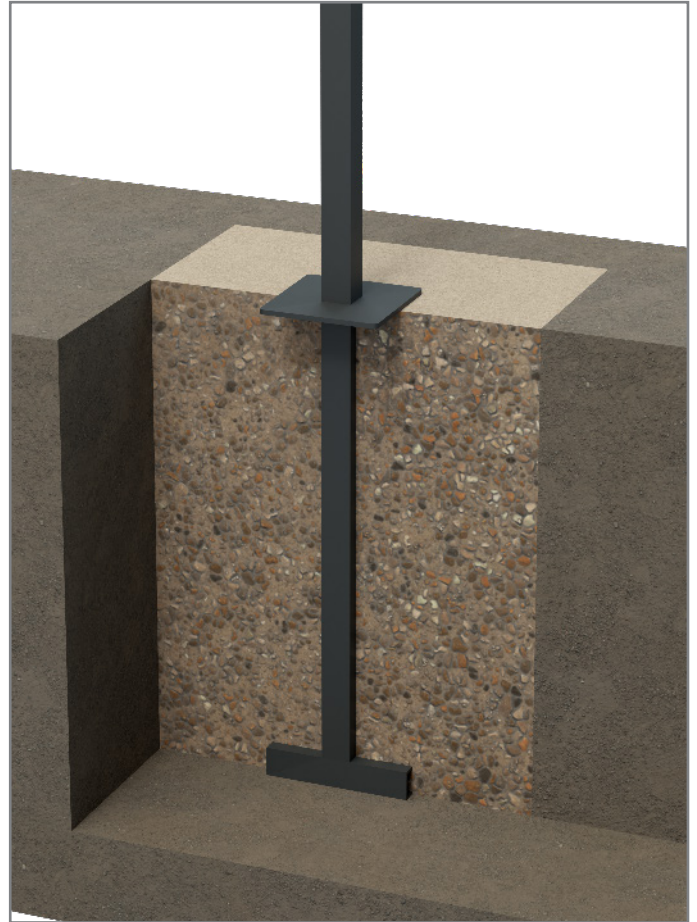
4. INSTALL CONCRETE FOUNDATIONS CONTD.

In-Ground option

Excavate a hole of approximately 500mm deep x 300mm wide x 300mm wide and install your in-ground post into the centre of the hole, ensure the centre of the post is set to the dimensions shown on the CAD drawing supplied and that your post is to be set level using your spirit level. Then back fill around the post with a suitable concrete mix, we recommend a C4 foundation grade of concrete.

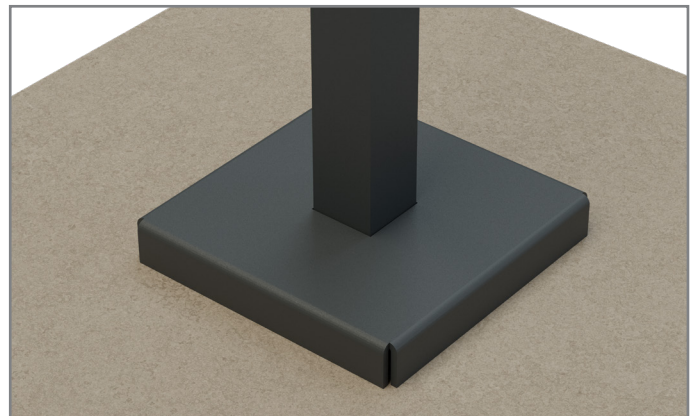
Measure centre to centre dimensions ensuring you follow your CAD drawing.

Once the concrete has cured you can then move onto the next stage.



5. INSTALL THE BASE PLATE COVERS

Simply install the base plate covers on top of the baseplate to cover over the heads of the floor fixings by sliding it over the inner post, even if you have chosen the inground options please install the base plate covers.

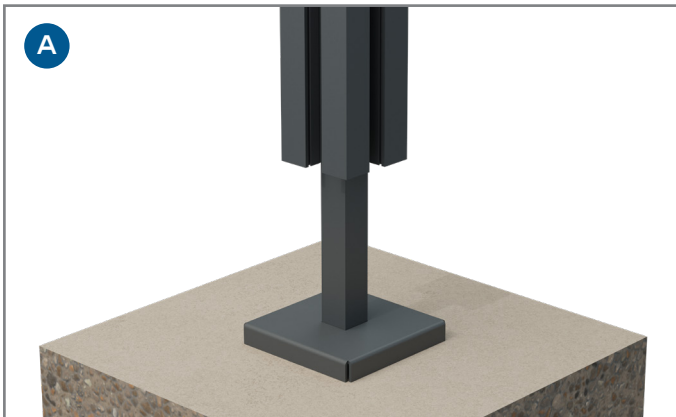


A-FENCE INSTALLATION INSTRUCTIONS

6. INSTALL THE POSTS

Slide the aluminium post over the top of the base plate and ensure the post is plumb, consider packing up the base plate if it is not plumb.

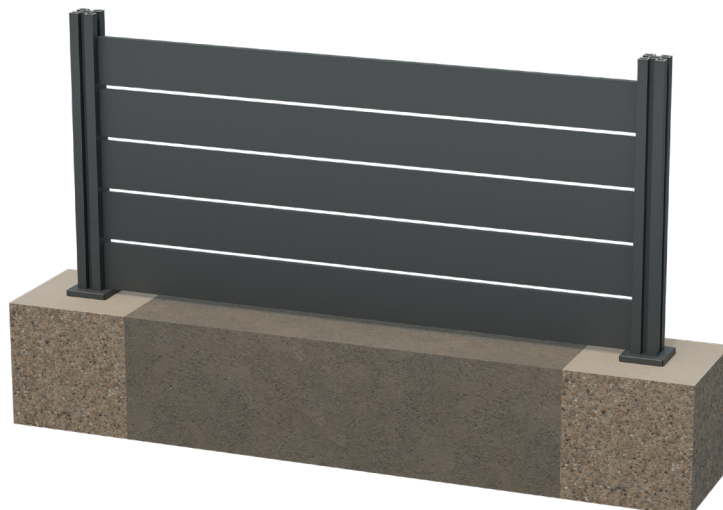
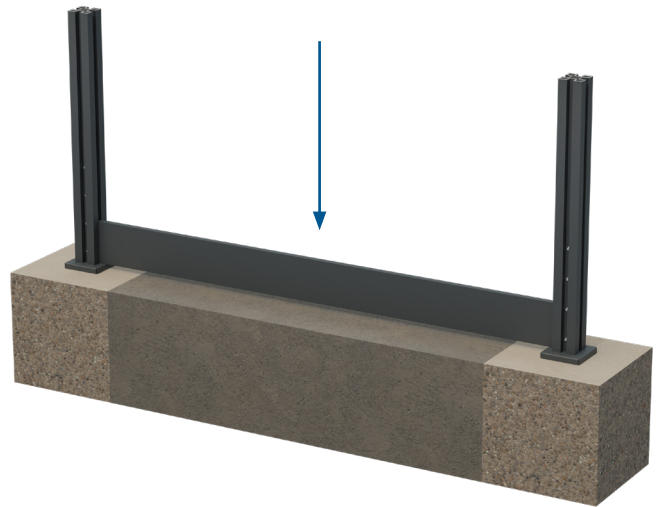
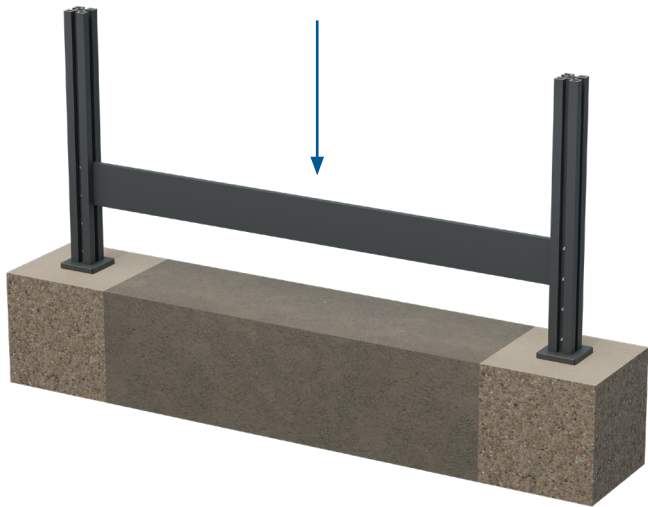
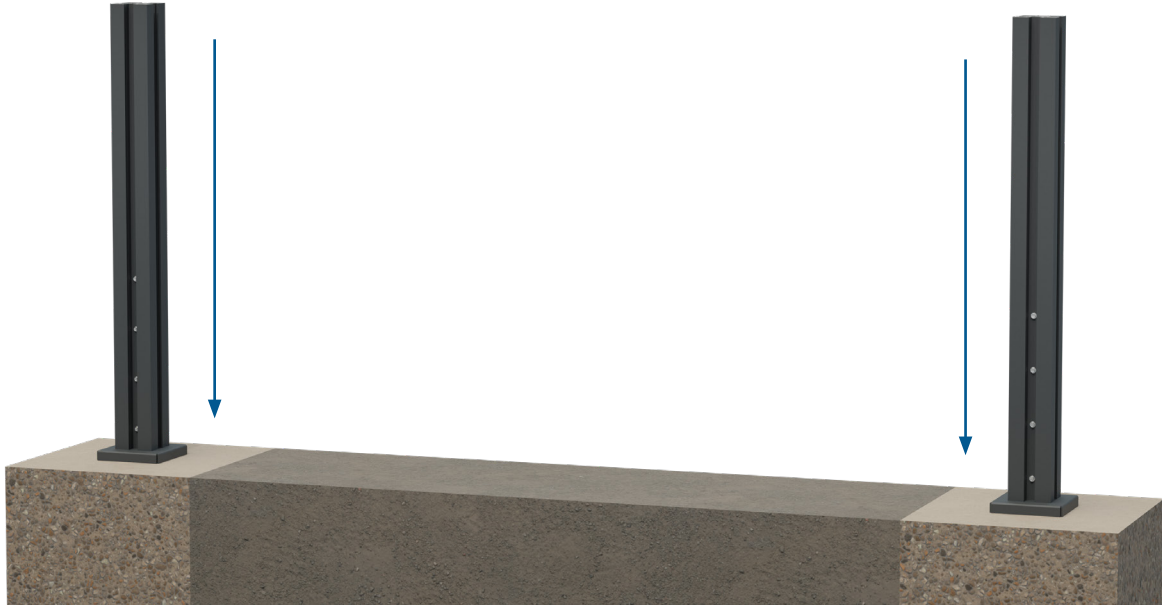
Then using a 4mm drill bit and a cordless drill, drill a pilot hole through the drill line in the front centre of the post for the self-drilling screws 50mm above the base plate and then at 100mm centres going up the post. Ensure you have a minimum of 4 fixings per post and the screws are in the centre of the channel.



A-FENCE INSTALLATION INSTRUCTIONS

7. INSTALL FENCE SLATS

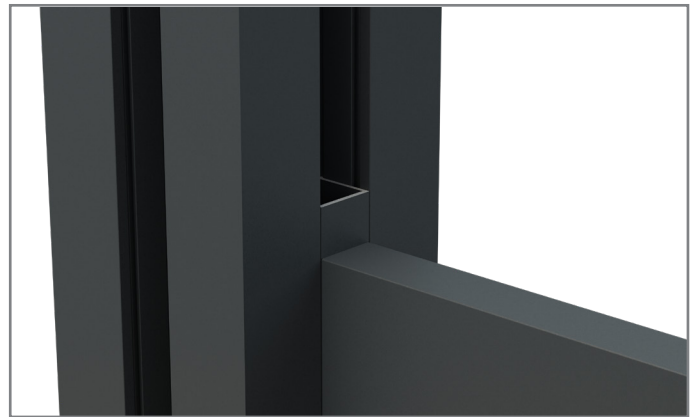
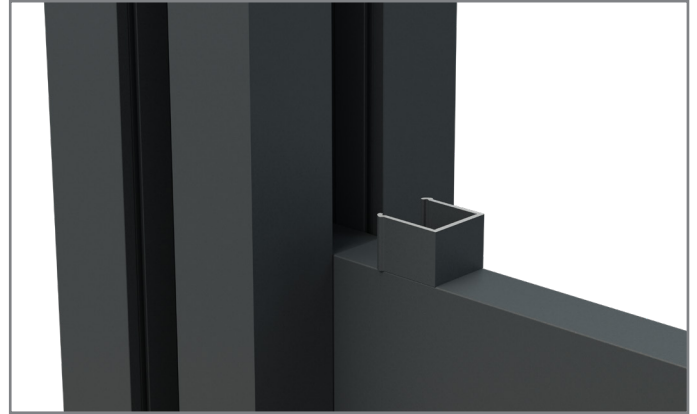
Now install your first fence slat by sliding the fence slat down from the top of the post all the way to the bottom.



A-FENCE INSTALLATION INSTRUCTIONS

8. INSTALL SLAT SPACERS

It is time to install the spacers (if required), the spacers are cut to various sizes depending on the height of your fence, the slats may be installed without them if installing a privacy fence. Simply press the spacers into the post channel as shown below.



9. INSTALL THE STAINLESS STEEL ANGLE BRACKET

Now install the angle bracket on top of the last slat. Using your No. 2 pozidrive screwdriver bit, simply install the angle bracket using the self-drilling screws, there is no need to pilot drill these fixings.

Add your final piece of trim to cover the angle bracket.

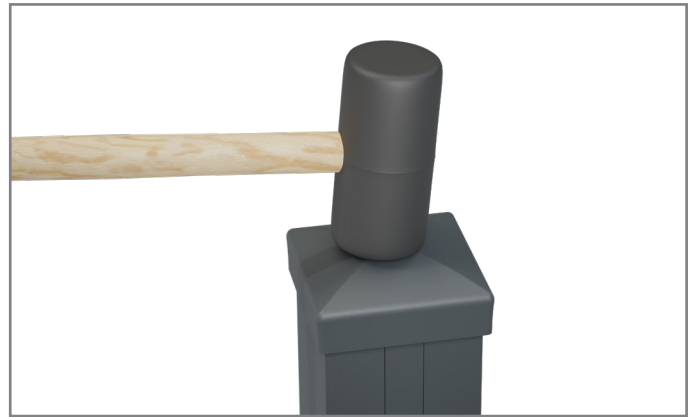
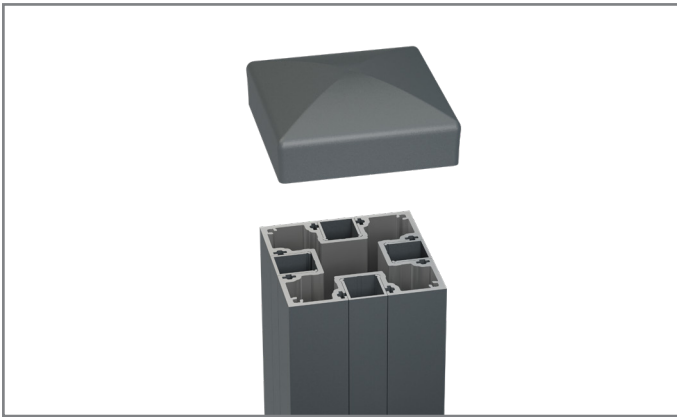
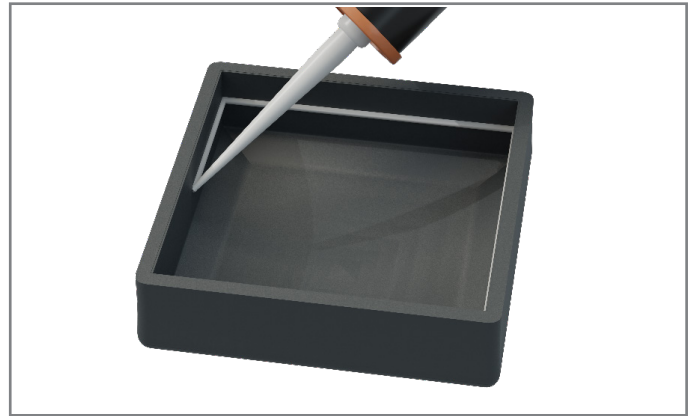
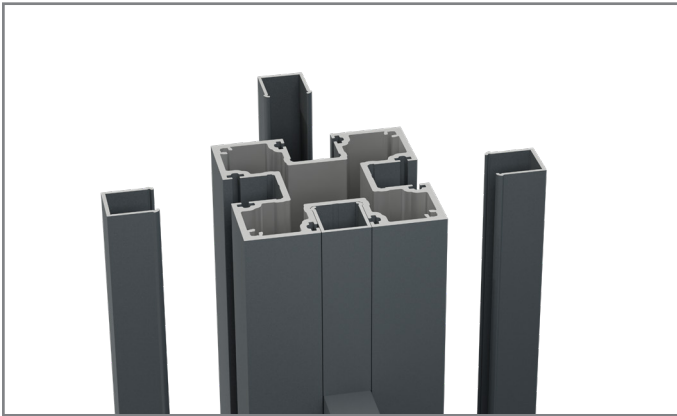


A-FENCE INSTALLATION INSTRUCTIONS

10. INSTALL SECONDARY TRIMS AND TOP CAPS

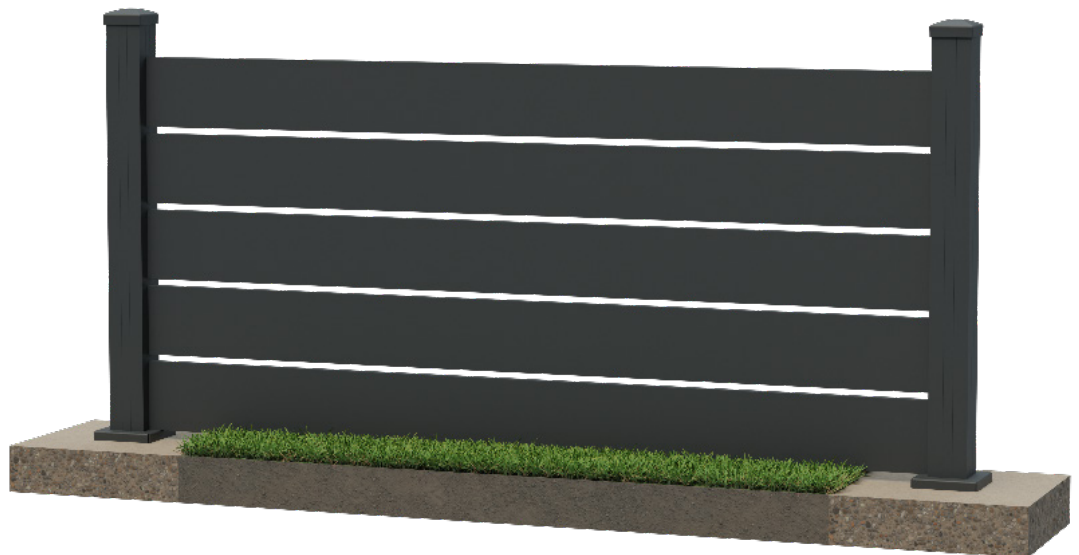
Install the secondary trims as required prior to installing the top cap.

Using the Sikaflex supplied apply a liberal amount of sealer around the inside of the top cap, then using your rubber mallet tap the top cap onto the top of the post, repeat this process to all top caps.



11. CLEAN

Using a solution of warm soapy water and a lint free cloth clean the fence and remove any fingerprints, dust or grime.





This installation guide should be used in conjunction with the Installation video for this system which can be found on the trade partner area of our website.

A-Fence by Milwood Group

Europa & Jenner House, Victory Park, 1-2 Trident Close,
Medway City Estate, Rochester, ME2 4ER

0333 305 5272 | sales@milwoodgroup.com

WWW.MILWOODGROUP.COM